



METAL CRASH BARRIER

ENGINEERING | MANUFACTURING | GALVANIZING | SERVICES



G R INFRAPROJECTS LTD

YOUR SAFETY OUR PRIORITY

RELIABLE PRODUCTS - COMPETITIVE PRICING - DELIGHTED CUSTOMERS

GRIL AT A GLANCE

Incepted in the year 1965 under the worthy and constructive guidance and support of Shri Gumani Ram Agarwal, G R Infraprojects Ltd (GRIL) has successfully emerged and established itself as one of the top leading organization in Infrastructure Companies. GRIL is all set to venture into manufacturing and production of metal crash barrier at domestic as well as international platter. It is promoted and managed by skilled and experienced professionals, company is focused towards achieving its mantra of **"No Compromise on Safety"**.

GRIL has successfully established the COLD ROLL FORMING TECHNOLOGY. It has gradually expanded and set up different vertical for producing, manufacturing and galvanizing of Metal Crash Barrier, plant at Ahmedabad, Gujarat. We supply Metal Crash Barrier to all infrastructure companies on pan India basis.

GRIL has been actively selling metal crash barrier in the Indian and overseas market since 2014. We supply quality products from our state of art Metal Crash Barrier Manufacturing and Galvanizing plant (Ahmedabad) Gujarat. Our endeavour has been to benchmark the world's best engineering practices used worldwide. The assets owned by us are the world's best and we are the leader in taking initiative for the use of new technologies. Our manufacturing and galvanizing plant is well equipped with self-reliant functionalities. We produce quality materials for road safety, under one roof with ample resources, manpower and machineries.

We have a manufacturing and galvanizing capacity of more than 3000 tons/month of Metal Crash Barrier. GRIL possesses superior and excellent equipment's meeting every prerequisites, Accredited with ISO -9001 certification. We are also manufacturing Pedestrian Guardrail, Z-Purline, C-Channel and I-Beam.





Our Vision

- To leave Indian footprints in global infrastructure industry backed by world class performance and operational experience.
- To build its position among the most admired Infrastructure companies in India and become the best in class service provider globally.

Our Mission

- Maintain high standards of precision, quality and punctuality.
- Displaying technical soundness and construction effectiveness in all our deliverables.
- Preserving nature and enriching life of public at large.
- Setting new benchmarks of resource utilisation and efficiency.
- Creating value for stakeholders.

Our Values

- Business ethics and integrity.
- Respect time value and expectation of all associates.
- Empowerment of human resources.
- Agile Work Culture.
- Building trustworthy relationship with customers, stakeholders and society.

STRENGTHS

- One of the pioneers in manufacturing, galvanizing, commissioning products, services and Infrastructural set up.
- Backward integration of resources: self-owned dedicated in house manufacturing and galvanizing plants with world class technology.
- Manpower as an asset - our employees at GRIL possess rich experience, knowledge and on - site expertise in commissioning and implementation.
- Safety and Quality is our prime religion - We develop and deliver products ensuring a healthy and safe experience to our customers.
- Serving our clients with integrity, innovation, focus, customer services and safety oriented products for meeting construction, engineering and infrastructural needs.
- Customized business solutions for products and services.





METAL CRASH BARRIER

Metal Crash Barriers, popularly known as Highway Guardrails is specifically an element or infrastructural support for road safety which ensures safety and security of people and vehicles during unforeseen circumstances namely road accidents or mishaps. Metal Crash Barrier absorbs the impact of energy emitted from the colliding vehicle which thus results into minimization of risks and damage to vehicles and passengers.

We have a well-equipped in house Metal Crash Barrier manufacturing and galvanizing plant. Our manufacturing plant produce highly durable, reliable and high tensile strength Metal Crash Barrier and its components. We meet all mandatory requirements of respective Government authorities i.e. NHAI, MORTH, CPWD, PWD, AASTHO etc, and leading private construction companies like L&T, Sadbhav, Dinesh Chandra R Agrawal Infracon Private Ltd., Afcons Infrastructure Ltd., PNC Infratech Limited, Shapoorji Pallonji Group, Ashoka Buildcon Ltd, OSE etc.

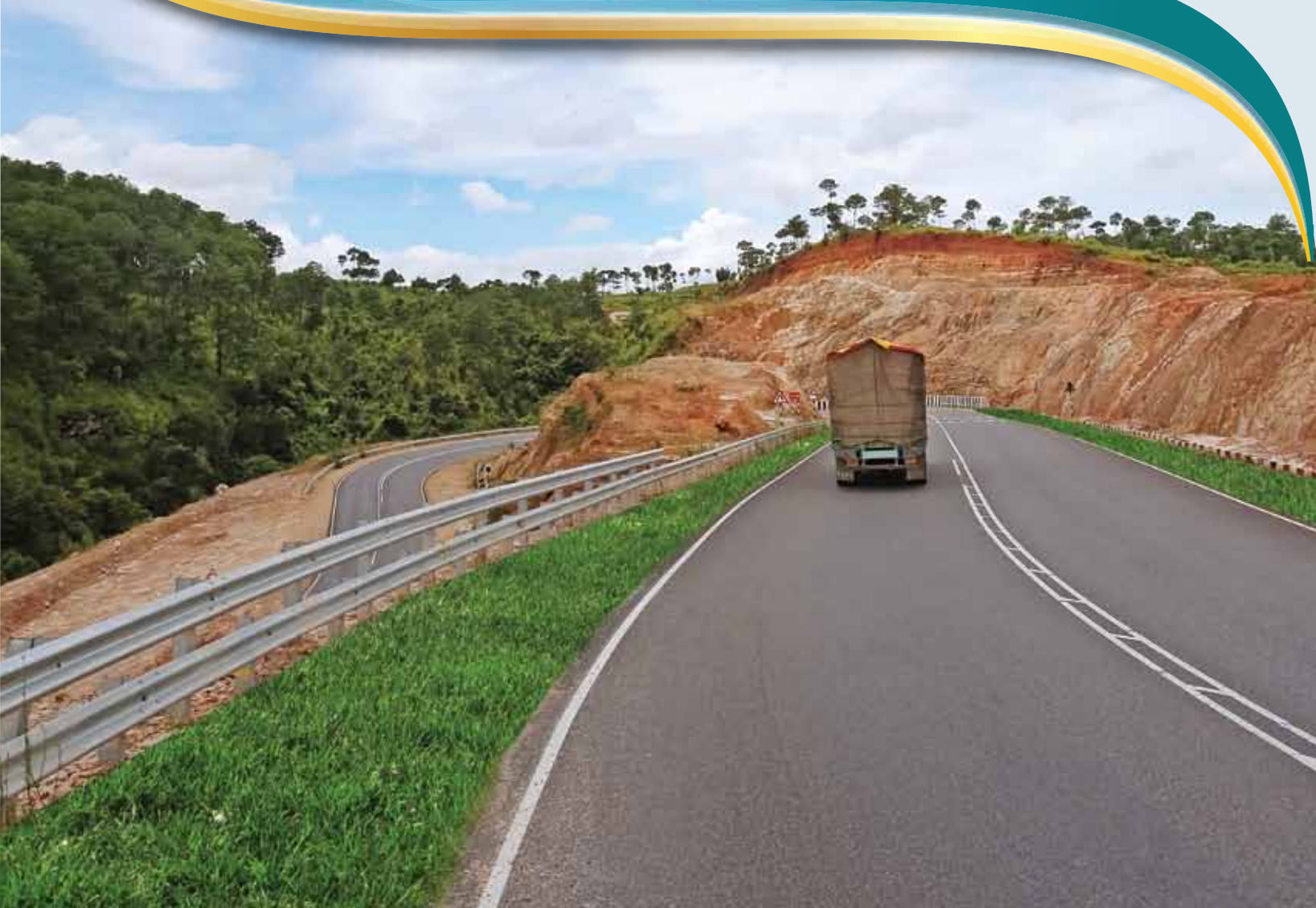
Customer satisfaction is our top priority irrespective of the order size. We offer both standard products and customized products to meet customer requirements. Our main focus is to provide our best services, with quality product on time and as per agreed standard.

Our Metal Crash Barrier Products offers hosts of advantages to our customers

- Enables quick repairs in case of accidents.
- All components are hot dip galvanized for longer life.
- Cost- effective and easy to install without any compromise in safety.
- End- to- end solutions - from manufacturing to commissioning.
- The Crash barrier absorbs maximum impact of the vehicle and ensure minimum damage to the vehicle and the occupants.
- During night and bad weather the barriers act as a visual guide to the drivers

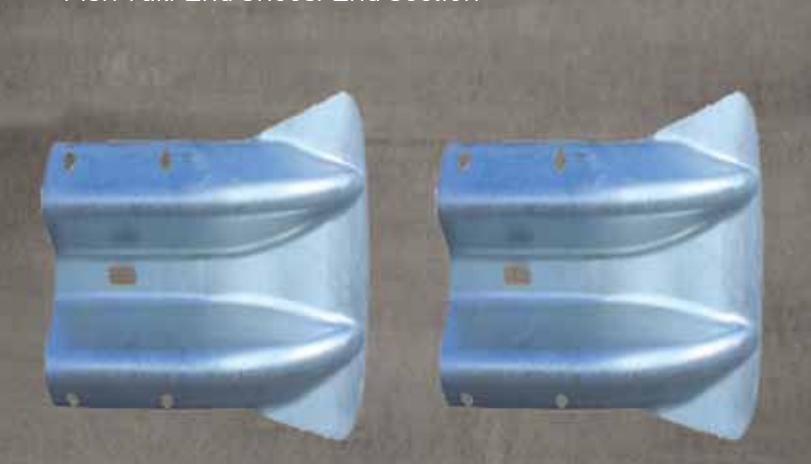
APPLICATIONS OF METAL CRASH BARRIER

- Highways, expressways, roads and bridges.
- High embankments/sharp curves.
- High density fast moving traffic areas in cities.
- Median barriers as road separators.
- Protection from tress, rocky areas.
- Hilly terrain, ghats, curves.
- Test tracks in automobile Industry, factories and mines.
- Mass housing complex/ townships.
- Airports, railway stations and parking places.





Fish Tail/End Shoes/End Section



Post/Spacer

Fasteners



COMPONENTS

W-beam

Cold roll formed section

- 3mm thick HR sheet.
- Fe 360/410/420/510 grade steel conforming to IS 5986 or IS 10748 or equivalent.
- Hot dip galvanized - 550 gms/m² conforming to MORTH (Ministry of Road Transport & Highways) and IS

End Section

- Anglised, Fish Tail or Tubular end terminals, End Shoe

Fasteners

- Hot dip galvanized or electro galvanized bolts, nuts and washers conforming to IS 1364 and IS 1367 of grade 4.6 MS
- 16mm diameter button-head bolts for W-beam to W-beam to spacer connection.
- 16mm dia Hexagonal head type bolts for spacer to post connection.

Post/ Spacer

Anchored to foundation on Ground & Bridges

- Channel section of 75 x 150 x 75 x 5mm.
- 5mm thick HR sheet.
- Fe 360/410/420/510 grade steel* conforming to IS 5986 or IS 10748 or IS 2062 or equivalent
- Hot dip galvanized 550gms/m² or 610gms/m² conforming to MORTH (Ministry of Road Transport & Highways) and IS

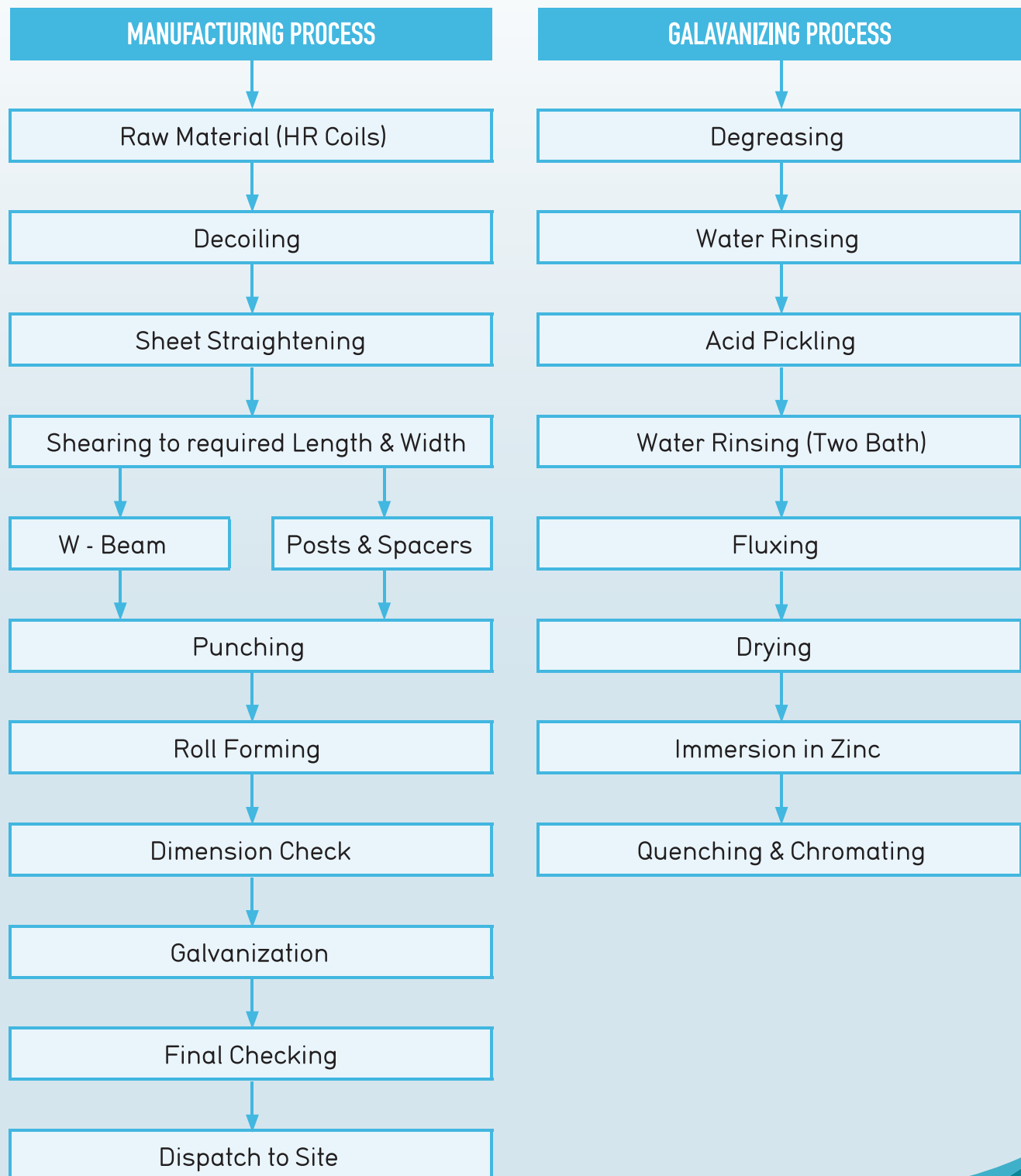
QUALITY

GRIL's engineers and experts scrutinize each process carefully in order to ensure outstanding quality and on-schedule delivery of products. The company has in-house testing lab to test the galvanized, mechanical and chemical properties of guardrails. The intention is to ensure that the regulatory requirements of governing authorities like National Highway Authority of India, State Transportation Departments & Ministries etc. are met in the process of guardrail production.

Understanding the benchmarks of expected quality and safety levels, GRIL strives to meet and ensure customer satisfaction with a motivated environment and friendly atmosphere. Our employees invest their skills, knowledge, experience and time in enhancing the value of stakeholders and customers with successful implementation and commissioning of projects. We abide by environmental ethics and consider ourselves responsible towards preserving nature. We provide infrastructural, engineering products and services with utmost safety and security.

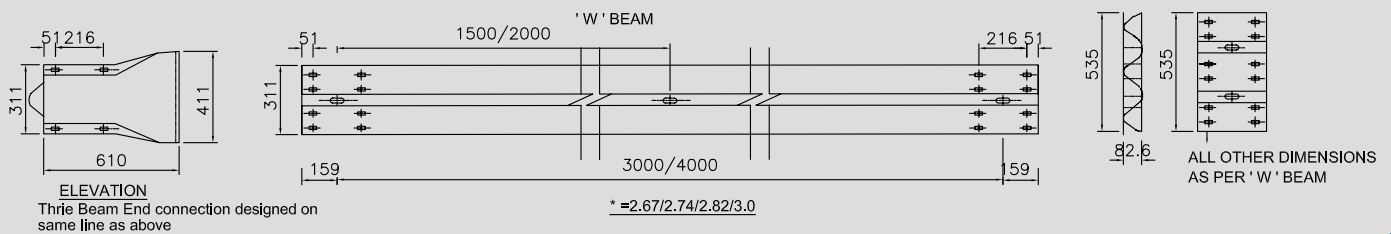
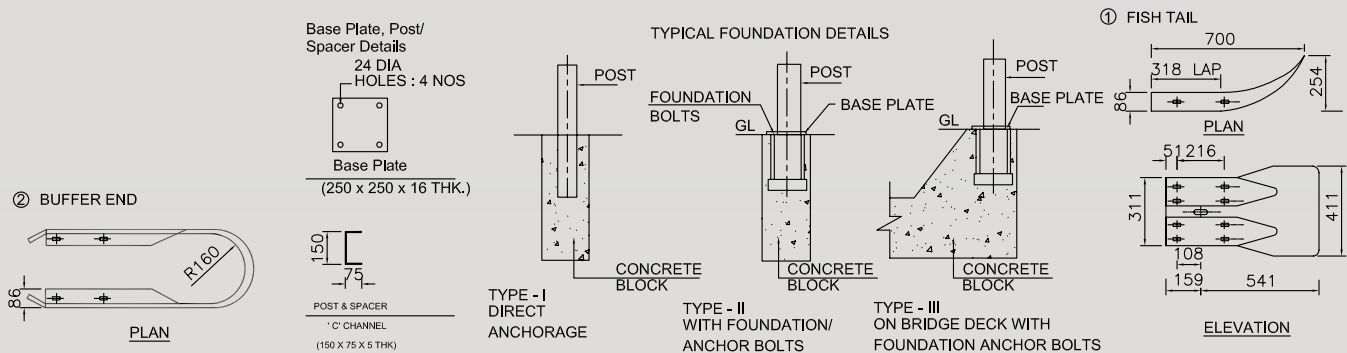
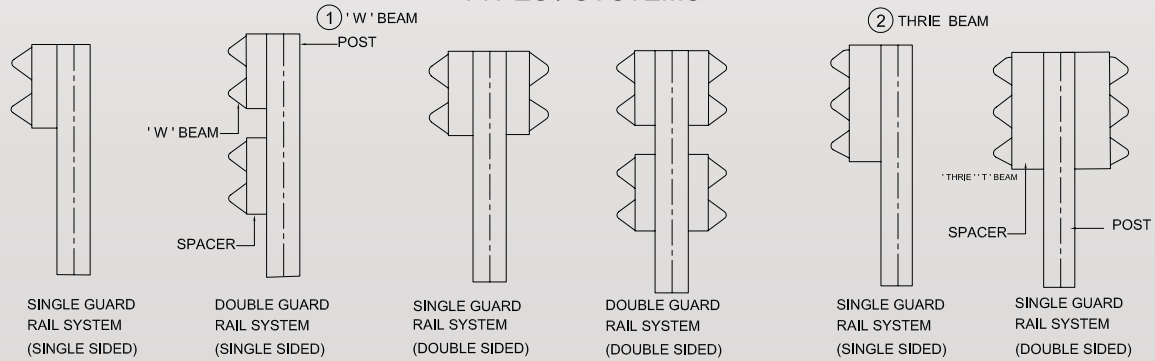


WE MANUFACTURE AND GALVANIZE MATERIAL WITH THE FOLLOWING PROCESS



TYPES OF METAL BEAM BARRIERS

METAL BEAM CRASH BARRIER / GUARDRAIL SYSTEMS: TYPES, DESIGN DETAILS & END CONNECTIONS TYPES / SYSTEMS





Single Guard Rail



Single Sided Crash Barrier with End Section



Double Side Single W- Beam



Single Sided Double W- Beam Crash Barrier



Three Beam Single Sided Crash Barrier



End Section/Fish Tail

[illegible]

CONSULTANT APPROVALS



Intercontinental Consultants and Technocrats Pvt. Ltd. In Joint Venture With **Rodic Consultants Pvt. Ltd.**

Consultancy Services for Construction Supervision for Civil Works of SH-81, SH-89, SH-90 State Highway Project II, Bihar

BSHP-II/TL/SH81/9/303/215

Authorized Signatory
(SH-81, Pkg-9)
M/s M.G. Contractor Pvt. Ltd
Vill. + PO- Bihta (Danwar)
Distt- Bhojpur (Bihar) - 802209

Sub: Improvement/Up-gradation of Balance Work in Sahar to Nasriganj to Km 83+250 of Sakkadi - Nasriganj Road, BSHP-II/9/SH-81

Reg: Source approval for W-Type, Metal Beam Crash Barrier from M/s Rajasthan

Ref: Your letter No. MGCPL/BSHP-II/9/SH-81/438 dated 26.12.2016

Dear Sir,

This has reference to the above cited letter regarding request for source approval for Metal Beam Crash Barrier from M/s G.R. Infra Project Ltd, Udaipur, Rajasthan.

M/s G.R. Infra has two Plants located in Ahmedabad, Gujarat and Udaipur, Rajasthan. The Plant of M/s G.R. Infra in Ahmedabad, Gujarat was inspected and found approval was given for SH-90, Pkg-4 vide our letter No. BSHP-II/TL/20.12.2016.

On the basis of above source approval of plant in Ahmedabad, provisional source approval for Metal Beam Crash Barrier from M/s G.R. Infra Project Ltd, Udaipur, Rajasthan subject to satisfactory result of inspection of Rajasthan plant.

Thanking you,
Yours sincerely,
For ICT- Rodic (JV)



Our ref: TJ/EP-I/P-II/2017/638

To,
The Authorized Signatory,
M/s Sadbhav Engineering Ltd,
Eastern Peripheral Expressway,
Village: Khella, Banthala-Dhikouli Road,
Near Badagaon, PO: Ratouli, Tehsil: Khakra
Distt: Baghpat (U P) - 250101.

Sub: Development of Six-Lane Eastern Peripheral Expressway (NH No. NE-II) 22.000 to Km. 46.500 in the State of Uttar Pradesh on EPC Basis- Visit & Metal Beam Crash Barrier Plants for Source Approval - M/s. GR Infra Concurred with Comments.

Ref: Your letter No. SEL/EPE-NE-II/PKG-II/AE/17/1441 dated 10.07.2017

Dear Sir,

With reference to the above mentioned subject matter, the source visit to manufacturing plant jointly along with your representative to examine the other capacity of production unit, procurement of raw materials, process and facilities and system (Report attached). Following are the observations:

- Factory is having adequate nos. of equipments duly calibrated for in-house Quality Control.
- Different samples of W beam, Post and Spacer were checked / tested random Chemical Composition.
- The manufacturer is supplying the material to various NHAI projects.

Based on above observations the source is hereby provisionally concurred subject to following conditions.

1. Must be accompanied by Manufacturers Test Certificate for every lot and tested for review.
2. If any test piece selected from a lot fails, no retesting shall be done and



Local People. Global Experience

SMEC (India) Pvt. Ltd.
C/o Village & Post Sumerpur,
NH-58, Road Side,
Near Hanuman Mandir,
Distt. Rudrapur (UTTARAKHAND) - 246171, India
Telephone: +91-
Email: Dsc2.rudrapur@smec.com
www.smec.com

Ref. No. 7061405/UEAP/RE Rudrapur/368

Dated: 10.12.20

To,
The Team Leader,
SMEC India Pvt. Ltd.
C/o Sanjay Kumar
Priyavansh Niwas, Village & Post Srikot
Near Petrol Pump, Srinagar Garhwal-246174.
Distt. Pauri (Garhwal)
www.smec.com

Sub: Consultancy Services for Design & Supervision for Restoration of Roads in District Rudrapur, Pauri & Haridwar in Uttarakhand DSC-2: Vender Approval of Metal Beam Crash Barrier

Riff: Contractor Letter no RGB/UEAP/41 date 09.12.15

Dear Sir,

We have referred submitted profile and MTC of vender M/S G R Infra projects Ltd. Ahmedabad Metal Beam Crash Barrier. Subjected to submitted Metal Beam Crash Barrier detail and MTC of material supply at site.

We have recommended for vender approval for Metal Beam Crash Barrier is forwarded for verification and future necessary action

Thanking and assuring our best services always.

Yours faithfully,

(Signature)

Ashok Kumar Gupta



Stanley Consultants INC.

A Stanley Group Company
Engineering, Environmental and Construction Services Worldwide

GUJARAT STATE HIGHWAY
CONSULTANCY SERVICES FOR CONSTRUCTION

Our Ref: SCJ/GSHP-II/CSC/TLO/2343

The Project Manager,
N.G Project Ltd and Tarmat Ltd (JV)
403, Akash Ganga Complex,
Next to Bhaskar Flat Showroom
Gujarat College, Ellisbridge
Ahmedabad - 380006

Sub: Widening and Strengthening of Dabhoi- Bodeli Road and Retaining Wall at Karjan-Dabhoi Road - GSHP-II/NCB-01: Approval of MBCB Ahmedabad

**Ref: i) Your letter No. NGPL-TL (JV)/RO/01/2015/342 dated 28th Ju
ii) Our Letter No. SCJ/GSHP-II/CSC/TLO/2145 dated 27th Ju**

Dear Sir,

This has reference to your letter mentioned above regarding re-visit of Infra Ahmedabad for the procurement of MBCB. Subsequently as per 3 of M/s G R Infra was re-visited by our Sr. Quality/Materials Engineering representative on 1st August 2015. During inspection particularly process noticed that defects pointed out earlier have been corrected by all machineries. Galvanization process of all components is being done. Upon examining the credentials and satisfactory factory visit/s, we hereby approve M/s Pvt. Ltd. Ahmedabad for the procurement of MBCB subject to following:

- (a) Finished product delivered at site shall be free from blemish size as per approved working drawing.
- (b) Sample of each lot of W-beam, Post, Spacer delivered at site third party to ensure uniform zinc coatings (min 550 g/sq.m) sheets (Base metal) as per requirement mentioned in specifications i.e. Yield strength (min 345 MPa), Tensile Strength and elongation (min 12 %).
- (c) Manufacturer's test reports complete in all respect shall be submitted with lot of product.

This is for your information and necessary action.

Thanking you,
Yours faithfully,

For and on behalf of Stanley Consultants Inc.

ISO CERTIFICATE

CERTIFICATE OF COMPLIANCE



INTERNATIONAL CERTIFICATION SERVICES PVT. LTD.

This is to certify that the
QUALITY MANAGEMENT SYSTEM of

G R INFRAPROJECTS LIMITED

Office: "GR House" Hiran Magri, Sector - 11, Udaipur - 313 002, Rajasthan, India.
Plant 1: E-270-271, Bhamashah Industrial Area, Kaladwas, Girwa, Udaipur - 313 001, Rajasthan, India.
Plant 2: Revenue Block No. 223, Old Survey No. 384/1, 348/2, Paiki And 384/3, Khata No. 464, Kochariya, Bavla, Ahmedabad - 382 220, Gujarat, India.

has been assessed and registered as complying with the requirements of the following International Standard:

ISO 9001:2008

The Quality Management System applicable to:

Scope: Construction Of Infrastructure Development Projects
Manufacture And Supply Of Bitumen, Emulsion, PMB & CRMB
Manufacture And Supply Of Road Safety Products Such As Metal Beam
Crash Barrier (Highway Guardrails), Pedestrian Guardrails, Reflectors,
Road Signages And Thermoplastic Paints.

Registration No.	: RQ91/6251
Registered Date	: 27 th March, 2013
Reassessment Date	: 23 rd April, 2016
Issue Date	: 25 th April, 2016
Valid Upto	: 14 th September, 2018



JAS-ANZ



www.jas-anz.org/register



S. Calan

Managing Director
International Certification Services Pvt. Ltd.

Accredited by Joint Accreditation System of Australia and New Zealand

Validity of this certificate is based on periodic audits of the management system defined by the above scope and is contingent upon prompt, written notification of significant changes to the management system and/or its components thereof shall be immediately communicated to ICS.
Further clarifications regarding the scope of this certificate and the applicability of ISO 9001:2008 requirements may be obtained at www.icsasian.com
Expiry date 26th March, 2019 subject to upgradation of ISO 9001:2015

MACHINERIES AT FABRICATION PLANT



ASSEMBLER



Z & C PURLIN MACHINE



SAW ARC WELDING MACHINE (SAW)



SHEARING MACHINE



SHEET PROFILE MACHINE



HIGH DEFINITION PLASMA MACHINE

PRODUCT GALLERY



METAL CRASH BARRIER



I-BEAM



Z-PURLIN



PROFILE SHEET



C-CHANNEL



PEDESTRIAN GUARDRAIL

PHOTO GALLERY

GRIL Manufacturing Plant



GRIL Galvanizing Unit



Plant Office







MANUFACTURING PLANT

G R INFRAPROJECTS LTD

Revenue Block no 223,
Old Survey No 384/1, 384/2 Paiki
and 384/3, Khata no - 464,
Kochariya, Bavla,
Ahmedabad - 382220,
Gujarat, India

Contact: 07042292793, 07042292792

Email: pran.s@grinfra.com,
suresh.m@grinfra.com

REGISTERED OFFICE

G R INFRAPROJECTS LTD

Revenue Block no 223,
Old Survey No 384/1, 384/2
Paiki and 384/3, Khata no - 464,
Kochariya, Bavla,
Ahmedabad - 382220,
Gujarat, India

Contact: 7043977747, 7043977795

Email: abcb@grinfra.com

CORPORATE OFFICE

G R INFRAPROJECTS LTD

2nd Floor, Novus Tower,
Plot no 18, Sector 18,
Gurugram, Haryana - 122015
Tel: +91-124 6435000
Email: delhi@grinfra.com

